



510 N Sheridan Road Suite D | Tulsa, OK 74115 | (918) 520-3441 | OMMA #: LAAA-OO95-HXSF

Report of Analysis

Report Status: Final

Client Name: D9 Growing LLC
Address: 1427 E 4TH ST
Tulsa, OK 74120
Phone:
OMMA #: GAAA-41NT-PLVM
Collected:
Harvest/Production: 12/02/2022
Special Notes:

Lab ID: -2494
Strain: White Skunk
Matrix: Flower - Cured
Sample Batch #: 1A40E0100014692000001363
Sample Weight: 10
Received: 12/19/2022



Summary of Results

Potency Profile	
Cannabinoid	Weight %
CBDV	ND
CBD	ND
CBDA	ND
CBN	ND
CBD	ND
CBGA	0.947
CBG	ND
THCV	ND
Δ9-THC	0.407
Δ8-THC	ND
THCA	21.5
CBC	ND
Total THC Delta-9(%)	19.3
Total THC Delta-9(mg/g)	193
Total Cannabinoids (%)	22.9
Total Cannabinoids (mg/g)	229

Microbiological Profile	
All Results	Pass

Heavy Metals Screening	
All Results	Pass

Moisture Content		
All Results	11.81 %	Pass

Terpene Profile	
Terpene	Result %
α-Pinene	< LOQ
Camphene	< LOQ
Myrcene	0.412
a-Terpinene	< LOQ
β-pinene	< LOQ
3-Carene	< LOQ
Ocimene	< LOQ
Delta-limonene	0.179
p-Cymene	< LOQ
Eucalyptol	< LOQ
γ-Terpinene	< LOQ
Terpinolene	< LOQ
Linalool	0.0989
Isopulegol	< LOQ
Geraniol	0.0777
β-Caryophyllene	0.172
Humulene	0.0788
cis-Nerolidol	< LOQ
trans-Nerolidol	0.0741
Nerolidol	0.131
Guaial	< LOQ
Caryophyllene oxide	< LOQ
α-Bisabolol	0.130
Total Terpene %	1.54

Pesticide Screening	
All Results	Pass

Filth and Foreign Materials Screening	
All Results	Pass

NOTES: mg/L = ppm, µg/L = ppb. "<" denotes "less than". ND is non-detectable quantity. This report of analysis may not be modified in any way, or reproduced except in full, without written approval from Transparent Testing. Results as reported relate only to samples as submitted, unless specifically noted otherwise. Measurement uncertainty is available upon request. **The Limit of Detection (LOD)** is the lowest limit at which the method can detect an analyte's presence as greater than zero. **The Limit of Quantitation (LOQ)** is the lowest limit at which the method is accurately able to quantify an analyte. The Threshold is the limit at which the Oklahoma Medical Marijuana Authority (OMMA) deems medical marijuana and marijuana-infused products as safe for use.



PJLA
Testing
Accreditation #115041
ISO/IEC 17025:2017 Accredited

Potency

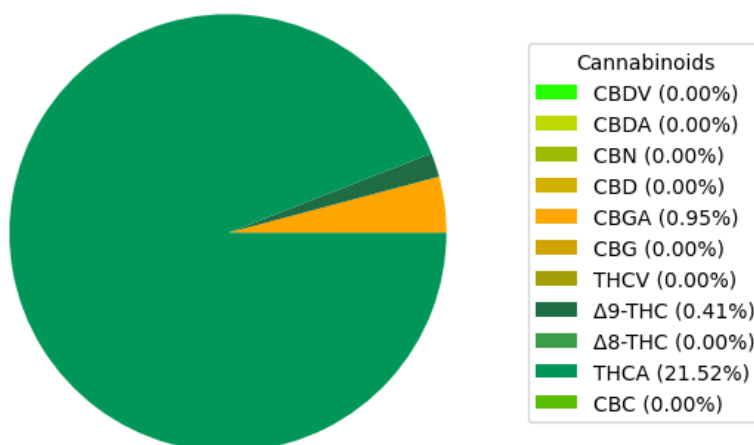
Date Completed: 12/22/2022

Instrument: Agilent 1100 (HPLC) - Agilent (DAD)

Lab Tech: Andrea Burrows

Analyte	Weight (%)	Result (mg/g)	LOQ (mg/g)
CBDV	ND	ND	0.650
CBDA	ND	ND	0.650
CBN	ND	ND	0.650
CBD	ND	ND	0.650
CBGA	0.947	9.47	0.650
CBG	ND	ND	0.650
THCV	ND	ND	0.650
Δ 9-THC	0.407	4.07	0.650
Δ 8-THC	ND	ND	0.650
THCA	21.5	215	0.650
CBC	ND	ND	0.650
Total CBD	ND	ND	
Total THC	19.3	193	

Cannabinoid Distribution (%)



NOTES: mg/L = ppm, μ g/L = ppb. "<" denotes "less than". ND is non-detectable quantity.

This report of analysis may not be modified in any way, or reproduced except in full, without written approval from Transparent Testing. Results as reported relate only to samples as submitted, unless specifically noted otherwise. Measurement uncertainty is available upon request. **The Limit of Detection (LOD)** is the lowest limit at which the method can detect an analyte's presence as greater than zero. **The Limit of Quantitation (LOQ)** is the lowest limit at which the method is accurately able to quantify an analyte. The Threshold is the limit at which the Oklahoma Medical Marijuana Authority (OMMA) deems medical marijuana and marijuana-infused products as safe for use.



PJLA
Testing
Accreditation #115041
ISO/IEC 17025:2017 Accredited

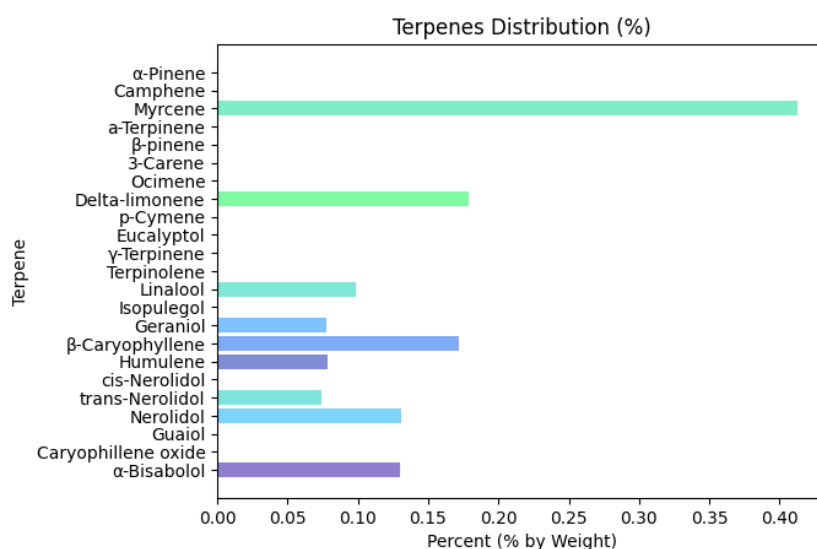
Terpenoid

Date Completed: 12/21/2022

Instrument: HP 6890 (GC) - Agilent (FID)

Lab Tech: Kaleb Mertz

Analyte	Result (mg/g)	Result (%)	LOD (µg/mL)	LOQ (µg/mL)
α-Pinene	< LOQ	< LOQ	6.25	12.5
Camphene	< LOQ	< LOQ	6.25	12.5
Myrcene	4.12	0.412	6.25	12.5
a-Terpinene	< LOQ	< LOQ	6.25	12.5
β-pinene	< LOQ	< LOQ	6.25	12.5
3-Carene	< LOQ	< LOQ	6.25	12.5
Ocimene	< LOQ	< LOQ	6.25	12.5
Delta-limonene	1.79	0.179	6.25	12.5
p-Cymene	< LOQ	< LOQ	6.25	12.5
Eucalyptol	< LOQ	< LOQ	6.25	12.5
γ-Terpinene	< LOQ	< LOQ	6.25	12.5
Terpinolene	< LOQ	< LOQ	6.25	12.5
Linalool	0.989	0.0989	6.25	12.5
Isopulegol	< LOQ	< LOQ	6.25	12.5
Geraniol	0.777	0.0777	6.25	12.5
β-Caryophyllene	1.72	0.172	6.25	12.5
Humulene	0.788	0.0788	6.25	12.5
cis-Nerolidol	< LOQ	< LOQ	6.25	12.5
trans-Nerolidol	0.741	0.0741	6.25	12.5
Nerolidol	1.31	0.131	6.25	12.5
Guaiol	< LOQ	< LOQ	6.25	12.5
Caryophyllene oxide	< LOQ	< LOQ	6.25	12.5
α-Bisabolol	1.30	0.130	6.25	12.5
Total Terpenes:	15.4	1.54		



NOTES: mg/L = ppm, µg/L = ppb. "<" denotes "less than". ND is non-detectable quantity. This report of analysis may not be modified in any way, or reproduced except in full, without written approval from Transparent Testing. Results as reported relate only to samples as submitted, unless specifically noted otherwise. Measurement uncertainty is available upon request. **The Limit of Detection (LOD)** is the lowest limit at which the method can detect an analyte's presence as greater than zero. **The Limit of Quantitation (LOQ)** is the lowest limit at which the method is accurately able to quantify an analyte. The Threshold is the limit at which the Oklahoma Medical Marijuana Authority (OMMA) deems medical marijuana and marijuana-infused products as safe for use.



PJLA
Testing
Accreditation #115041
ISO/IEC 17025:2017 Accredited

Foreign Materials

PASS

Date Completed: 12/20/2022

Instrument: NA

Lab Tech: Andrea Burrows

Analyte	Pass/Fail	Comments
Foreign Materials	Pass	N/A

Heavy Metals

PASS

Date Completed: 12/22/2022

Instrument: Perkin Elmer Elan DRC II (ICP-MS)

Lab Tech: Marchel Crawford

Analyte	Result (ppm)	Threshold (ppm)	LOD (ppm)	LOQ (ppm)	Pass/Fail
Cadmium	< LOQ	0.200	0.0500	0.100	Pass
Lead	< LOQ	0.500	0.125	0.250	Pass
Arsenic	0.178	0.200	0.0500	0.100	Pass
Mercury	< LOQ	0.100	0.0250	0.0500	Pass

Microbial Analysis

PASS

Date Completed: 12/22/2022

Instrument: Agilent AriaMx (qPCR)

Lab Tech: Karen Lanham

Analyte	Result (CFU/g)	Threshold (CFU/g)	Pass/Fail
Escherichia Coli (E. Coli)	ND	1.00	Pass
Yeast/Mold	1220	10,000	Pass
Salmonella spp	ND	1.00	Pass
Aspergillus Niger	ND	1.00	Pass
Aspergillus Fumigatus	ND	1.00	Pass
Aspergillus Terreus	ND	1.00	Pass
Aspergillus Flavus	ND	1.00	Pass

Moisture Content

PASS

Date Completed: 12/22/2022

Instrument: NA

Lab Tech: Zach Irvine

Analyte	Result (%)	Pass/Fail
Moisture Content	11.8	Pass

NOTES: mg/L = ppm, µg/L = ppb. "<" denotes "less than". ND is non-detectable quantity.

This report of analysis may not be modified in any way, or reproduced except in full, without written approval from Transparent Testing. Results as reported relate only to samples as submitted, unless specifically noted otherwise. Measurement uncertainty is available upon request. **The Limit of Detection (LOD)** is the lowest limit at which the method can detect an analyte's presence as greater than zero. **The Limit of Quantitation (LOQ)** is the lowest limit at which the method is accurately able to quantify an analyte. The Threshold is the limit at which the Oklahoma Medical Marijuana Authority (OMMA) deems medical marijuana and marijuana-infused products as safe for use.



PJLA
Testing
Accreditation #115041
ISO/IEC 17025:2017 Accredited

Pesticide Profile

PASS

Date Completed: 12/21/2022

Instrument: Agilent 1200 (HPLC) - Agilent 6460 (QQQ)

Lab Tech: Kaleb Mertz

Analyte	Result (ppm)	LOQ (ppm)	Threshold (ppm)	Pass/Fail
Abamectin	ND	0.251	0.500	Pass
Azoxystrobin	ND	0.100	0.200	Pass
Bifenazate	ND	0.100	0.200	Pass
Etoxazole	ND	0.100	0.200	Pass
Imazalil	ND	0.100	0.200	Pass
Imidacloprid	ND	0.200	0.400	Pass
Malathion	ND	0.100	0.200	Pass
Myclobutanil	ND	0.100	0.200	Pass
Permethrin	ND	0.100	0.200	Pass
Spinosad	ND	0.100	0.200	Pass
Spiromesifen	ND	0.100	0.200	Pass
Spirotetramat	ND	0.100	0.200	Pass
Tebuconazole	ND	0.200	0.400	Pass

Water Activity

PASS

Date Completed: 12/20/2022

Instrument: Rotronic Hygrola6 HC2-AW

Lab Tech: Zach Irvine

Analyte	Finding	Threshold	Pass/Fail
Water Activity	0.434	0.65	Pass



Approved By: Lab Director
Transparent Testing, LLC
12/22/2022

NOTES: mg/L = ppm, µg/L = ppb. "<" denotes "less than". ND is non-detectable quantity.

This report of analysis may not be modified in any way, or reproduced except in full, without written approval from Transparent Testing. Results as reported relate only to samples as submitted, unless specifically noted otherwise. Measurement uncertainty is available upon request. **The Limit of Detection (LOD)** is the lowest limit at which the method can detect an analyte's presence as greater than zero. **The Limit of Quantitation (LOQ)** is the lowest limit at which the method is accurately able to quantify an analyte. The Threshold is the limit at which the Oklahoma Medical Marijuana Authority (OMMA) deems medical marijuana and marijuana-infused products as safe for use.



PJLA
Testing
Accreditation #115041
ISO/IEC 17025:2017 Accredited